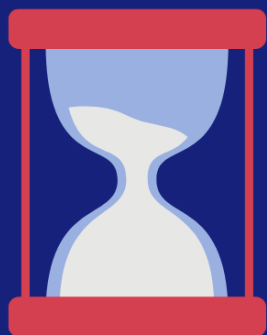


Five Types of Waste



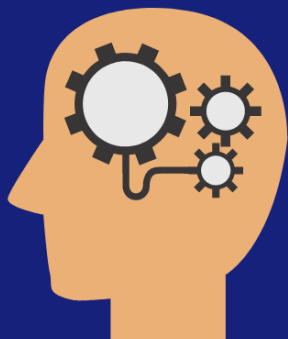
Over Production

Producing too much too quickly. By overproducing, you are contributing to other types of waste.



Wait Time

Employees are unable to do their part because resources are unavailable or behind schedule.



Over Processing

Doing too much is a waste of resources and time. If a product can be completed with less steps, it is being over-processed.



Defects

Items that are defective and need to be replaced increase wait times for employees and customers.



Conveyance

The action or process of passing something through unnecessary places or people.